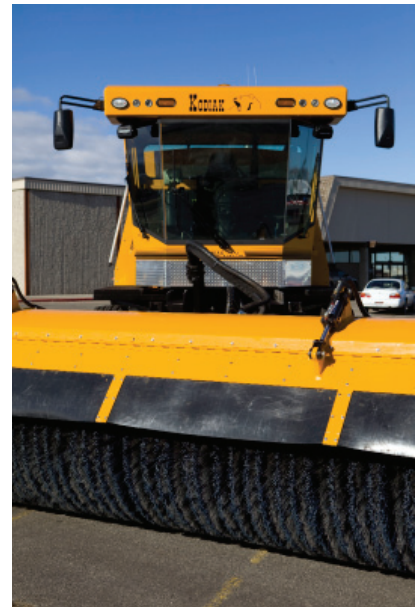


KODIAK RUNWAY SWEEPER/BROOM



**NOTHING HANDLES A RUNWAY
LIKE A KODIAK**



KODIAK RUNWAY SWEEPER/BROOM

- SPECIFICATIONS -

BROOM/AIRBLAST CONFIGURATION

- Truck Mounted High Speed Broom Head
- Truck Hitch – Parallel Lift Quick-Disconnect
- Auxiliary Power Unit w/ Airblast Assembly

BROOM HEAD

- Heavy-Duty Welded Construction
- Dual Motor End Drive or Single Motor Center Drive – Hydrostatically Driven
- Broom Weight – Centered on Chassis at all Angles
- Side to Side Oscillation – Eight (8) Degrees
- Casters – 360 Degree Rotation w/ Shimmy Dampener
- Brush Pattern Adjustment – Tool Less
- Caster Tires - 18x7x8 16 Ply Duals

BROOM

- Brush Length - 14' to 24'
- Brush Diameter – 36" or 46"
- Brush Type 19-1/2" I.D. Segments w/Spacers
- Ply and/or Crimped Wire Bristles
- Brush Cores – Welded Tubular Steel
- Dual Core Design – Minimal Center Gap

QUICK HITCH

- Parallel "Lift to Attach" Design
- Quick Disconnect – No Tools Required
- Weight Transfer System for Attachments

ENGINE POWER UNIT

- 300 HP thru 700 HP Available
- Electronically Controlled
- Turbo Charged and Charge Air Cooled
- Flywheel mounted 2-Pad Pump Drive
- Cooling Package – Heavy-Duty Fan/Radiator
- Air Cleaner – Dual Element w/Pre-Cleaner
- Engine Compartment – Fully Enclosed w/Doors

TRANSMISSION

- Industry Leading Componentry
- Pumps – Mounted in Tandem
- Motors – w/Hot Oil Shuttle Valve
- Maximum 5400 Ft/Lbs.
- Warranty: One year or as specified by Customer

AIR BLAST UNIT

- Dual Impeller – Left & Right Hand Nozzles
- 24,000 CFM Volume Rating
- Up to 450 MPH Velocity
- Complete Swept Path Covered by Air Flow
- Interlocked with Broom Controls
- Ducts Lift Up for Clearance while Transporting

HYDRAULIC SYSTEM & CONTROLS

- Pressure Compensated Hydraulic Pump
- Oil Reservoir, Filters, Valves, Disconnects, Oil Cooler, Hoses & Fittings per SAE Standards
- Controls – Located in the cab within easy reach
- Up/Down, Left/Right, Hitch Lift, Deflector etc.

*Kodiak America, LLC reserves the right to change specifications without notice. Consult Kodiak America, LLC for additional information.

